



CENTERVILLE MIDDLE SCHOOL

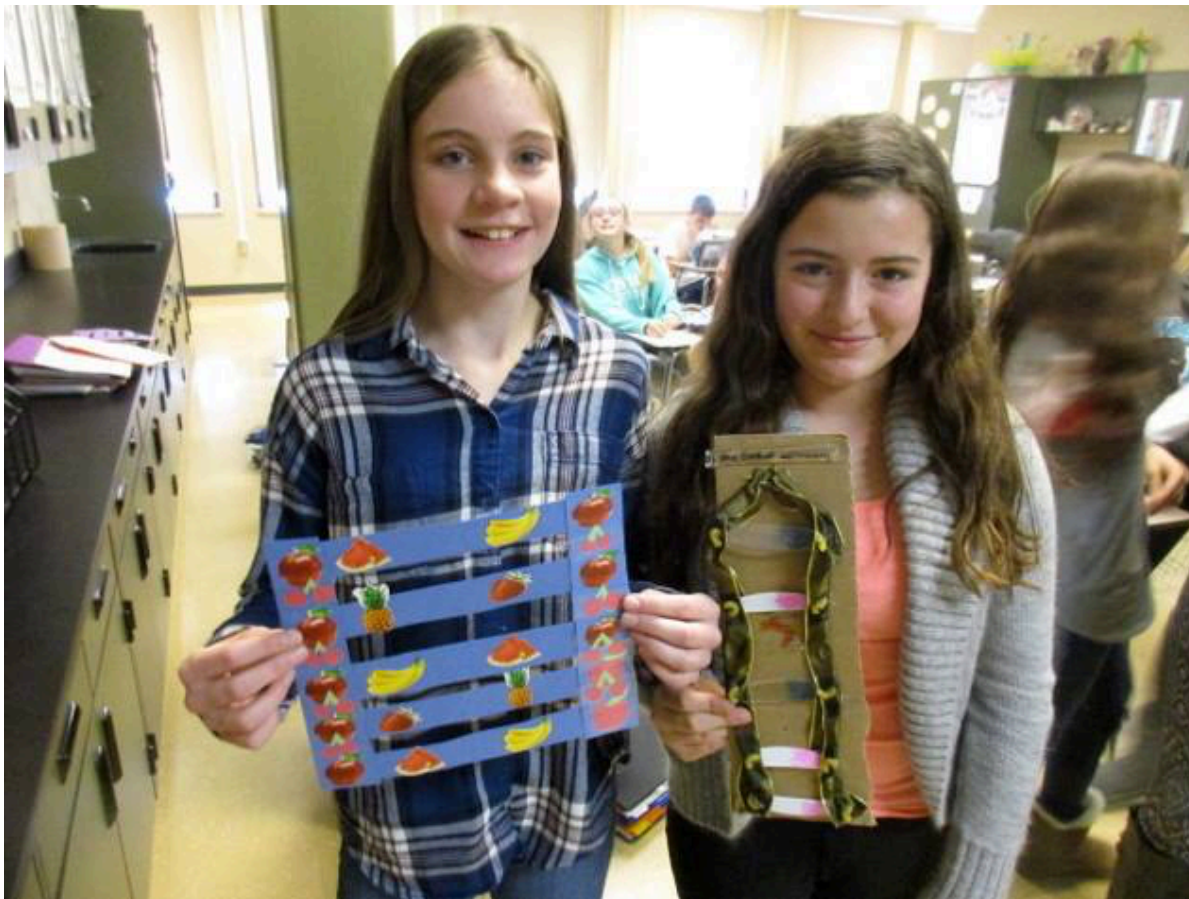
Mrs. Lisa Mumma – Principal

Mr. Ian Daecher – Assistant Principal

Mrs. Kasey Tobias – Guidance Counselor



WELCOME



WHO DO I CONTACT?



WHO DO I CONTACT?

Health Concerns

Call 717-618-5085 to speak to:

- Jennifer Norton RN, NCSN
- Bonnie Weaver, RN

Required immunizations seventh grade:

- Tdap (Tetanus Booster)
- MCV (Meningococcal vaccine)

(no later than the first 5 days of school)

WHO DO I CONTACT?

Classroom Concerns

- Contact the teacher directly.
 - Email: first_last@hempsfieldsd.org
 - Phone: (717) 898-5580



WHO DO I CONTACT?

Staff Concerns

- Not able to resolve an issue with a staff member
- Contact the Principal, Lisa Mumma
- Lisa_Mumma@hempfieldsd.org or 898-5580

Behavior

- If you would like to discuss student behavior
- Contact the Assistant Principal, Ian Daecher
- Ian_Daecher@hempfieldsd.org or 898-5580

WHO DO I CONTACT?

Social/Emotional and Educational Program Concerns

- Contact the 7th grade guidance counselor
- Kasey Tobias
- Kasey_Tobias@hempfieldsd.org
- 898-5578



General Information & ATTENDANCE



ATTENDANCE



Drop Off

- 7:10 a.m. doors open
- Please use drop off lanes at all times
- Late – please send in a note
- Students may sign in without parent/guardian

Attendance

- Three days to hand in a written excuse
- Slips are collected in Homeroom
- Forgetful child? Just call.

MORE ON ATTENDANCE...

Early dismissal

- A parent/guardian with ID must come in to the office and sign their student out.

Anticipated Absence

- Forms may be obtained from the main office
- Require Mrs. Mumma's approval
- Students should follow up with teachers prior to their trip.

Extended absence

- Call the guidance office at 898-5578 by 10:00 am so work can be collected.
- Please utilize Sapphire parent portal and Schoology.

EMERGENCY CONTACT INFORMATION

Only the contacts listed in Sapphire will be able to pick up your child.

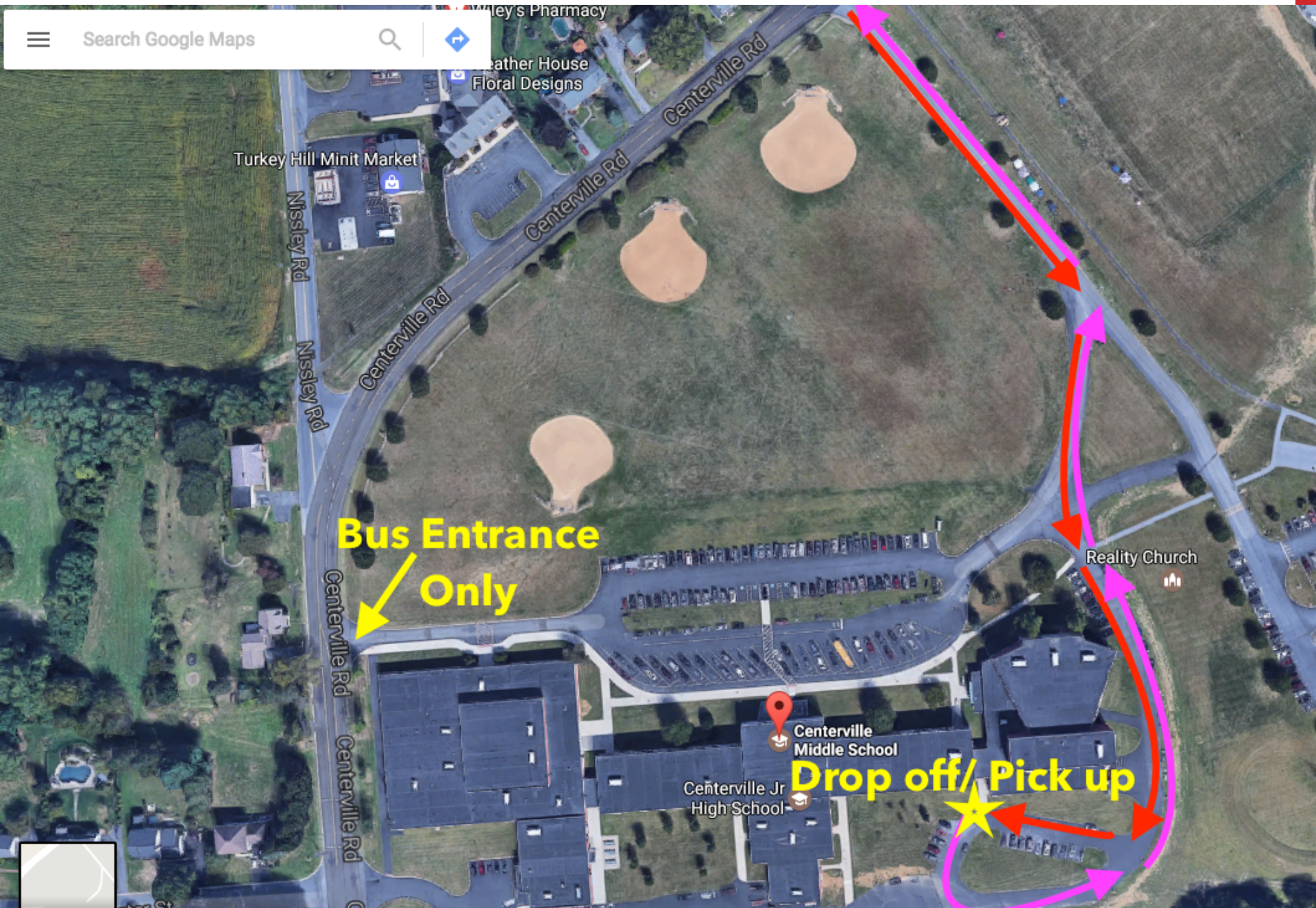
Adults must also have an ID with them to show the office secretaries.

When we need to contact home, we call parents first, then the other contacts in Sapphire.



EMERGENCY CONTACTS

CAR RIDER PICKUP AND DROP OFF



SCHOOL WIDE POSITIVE BEHAVIOR PLAN

C- Choose to be Safe

M- Make Responsible
Decisions

S- Show Respect



BEHAVIOR

- Focus on preventing incidences
- Learning from mistakes
- Reporting Incidences
- Unstructured Time (bus, hallways, cafeteria)
- Cameras (entrances, hallways, cafeteria)
- Parent Portal grades and discipline

DRESS FOR SUCCESS

Dress Code

- Must be covered Armpit to Armpit down to midthigh
- No cleavage, torsos, undergarments, or upper thighs should be showing
- Straps should be three finger widths wide
- No advertising alcohol, firearms, tobacco



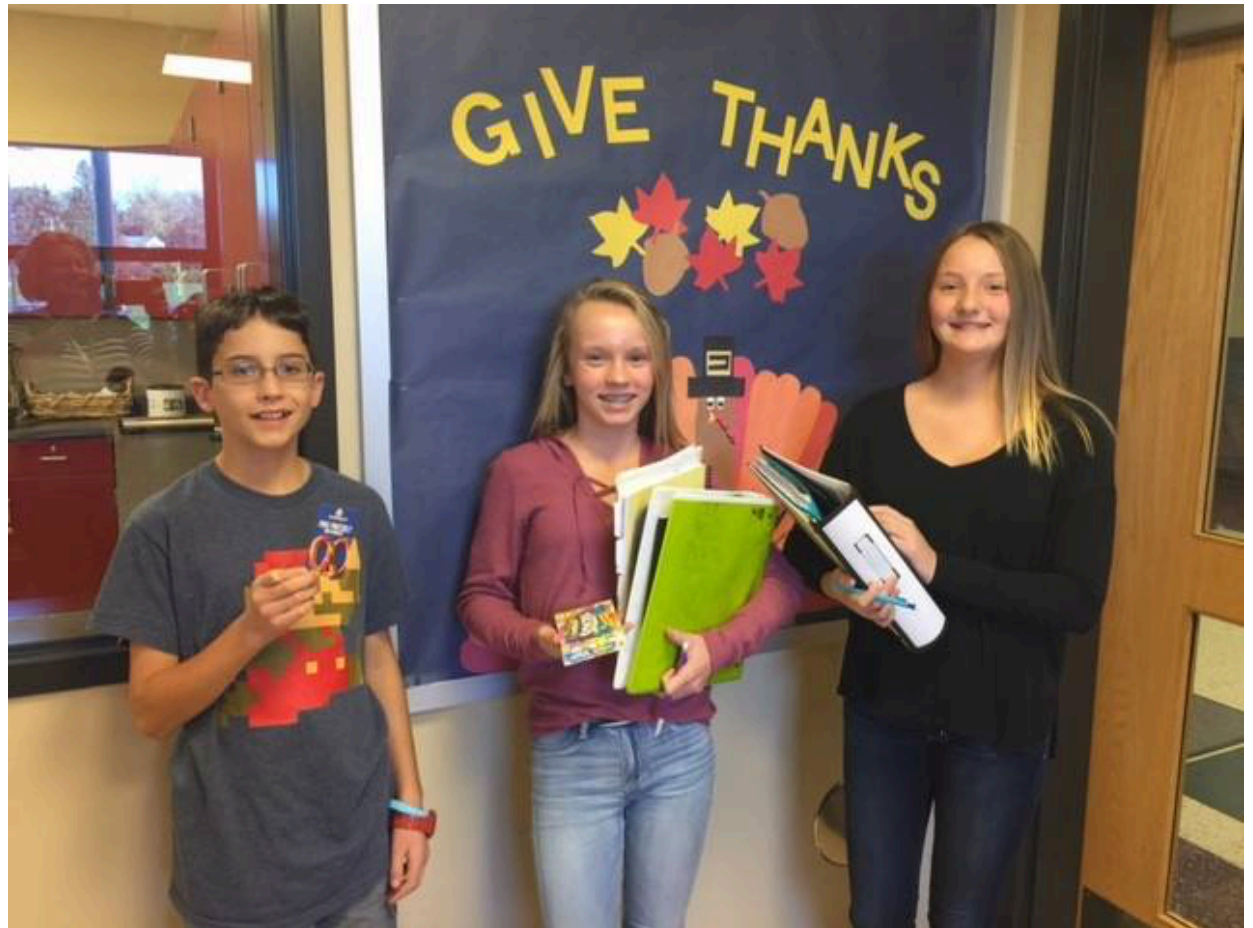
PHYSICAL EDUCATION

We do not sell uniforms.

- Black, Red, or grey shorts (or sweatpants)
- White, black or red shirt



STUDENT DAILY LIFE



Encourage your child

- Self advocacy skills
- Time Management
- Organization
- Social Media Management



FIRST DAY OF SCHOOL



Items covered during extended homeroom

- Student Schedule
- Locker assignment & combination
- Tour of entire building with student schedule
- Student Planner (rules & regulations)

FIRST DAY CONTINUED



- Emergency cards distributed
- Lunch menus/ free-reduced application
www.EZMealApp.com
- Procedures for taking medication
- Parent volunteer form
- Student insurance information
- Excuse Card booklet



HOMEWORK

Homework is posted on Schoology.

Please communicate with your student's teacher to check on homework help. Many of our textbooks have online help for homework.

Emails are good; however, calls are sometimes better !



STUDENT ACTIVITIES

- Spelling Bee
- Geography Bee
- Math Counts
- Student Council
- Interscholastic Sports
- Band/Orchestra/Chorus
- National Geography Bee
- Middle School Production



ACTIVITIES CONTINUED.....

- Science Fair
- Quiz Bowl
- Chess Team
- Jazz Band
- PA Math League
- Aavidum
- Middle Pages News Paper



Watch for updates on the website by reading the morning announcements

ATHLETICS

- School-sponsored physicals the first week of June in Franklin Gym for \$20.00.
- Turn into the athletic office as soon as possible
- PIAA physical forms will be posted on the athletic web page
- Covers students all year long
- Present activity fee is \$50
- First day of fall sports: Monday, August 21

TEAMING

SCRIBES



SCHEDULE

- 7 period day
- 46 minute periods
- 4 lunches
- 4 minutes between classes



HR/Period 1	Start	7:28
	End	8:22
Period 2	Start	8:26
	End	9:12
Period 3	Start	9:16
	End	10:02
Period A	Start	10:06
	End	10:36
Period 4	Start	10:40
	End	10:52
Period B	Start	10:56
	End	11:26
Period 5	Start	11:30
	End	11:42
Period C	Start	11:46
	End	12:16
Period 6	Start	12:20
	End	12:32
Period D	Start	12:36
	End	1:06
Period 7	Start	1:10
	End	1:56
FLEX	Start	2:00
	End	2:40

CURRICULUM

7 periods

- 1) Math
- 2) Science
- 3) History
- 4) ELA 7 (double period)
- 5) ELA 7
- 6) Phys ed./Music/Health
- 7) FCS/BCIT/Art/Tech Ed.

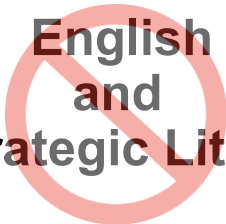
MP1	MP2	MP3	MP4
PE / Music	PE / Music	PE / Health	PE / Health
BCIT	Tech Ed	FCS	Art

ELA

Students will have a double period of ELA with one teacher.

No longer will have two separate courses.

**English
and
Strategic Literacy**



Recommend for:

- Advanced ELA 7
- ELA 7
- Foundations ELA 7



COURSE RECOMMENDATIONS INTO 7TH GRADE CLASSES

COURSE RECOMMENDATIONS CONSIST OF 4 THINGS:

- THE STUDENT'S CURRENT COURSE GRADE**
- THE STUDENT'S PSSA PERFORMANCE**
- THE STUDENT'S PVAAS PROJECTION**
- THE STUDENT'S GRADE TEST STANINES**

QUALITIES OF A STUDENT PLACED IN ADVANCED LEVEL:

- ANALYTICAL THINKER**
- STRONG READER AND WRITER**
- ABILITY TO COMPREHEND AND MASTER NEW SKILLS AT A QUICK PACE**

LEVELS

Math

- 1) Algebra 1A
- 2) Pre-Algebra Accelerated
- 3) Pre-Algebra A
- 4) Foundations of Math 7

Science

- 1) Advanced Life Science
- 2) Life Science

History

- 1) Advanced World History
- 2) World History

ELA 7 (double period)

- 1) Advanced ELA 7
- 2) ELA 7
- 3) Foundations ELA 7

MUSIC

Band/Chorus/Orchestra ensembles will occur during FLEX once a cycle.

This will allow the Middle School to have 4 FLEX days without scheduled ensembles.

Students will be given a choice for their music exploratory:

- 1. Music 7**
- 2. Vocal Techniques**
- 3. String Techniques**
- 4. Brass/Woodwinds/Percussion Techniques**

Students who elect Instrumental Band or Instrumental Orchestra will be given an additional choice - can elect additional time in this course in place of ½ MP of PE

SNEAK A PEAK AT CMS



GRADE 6 VISITATION DAYS

School Visits

- May 9 MES
- May 11 EPES
- May 15 CES
- May 17 RES



SUMMER TOURS

August 8, 2017 10:00 to 11:30am

August 15, 2017 6:00 to 7:30pm

Student guides will be available those days.

Parents are welcome!



FEEL CONNECTED TO CMS

Our website:

www.hempfieldsd.org

- **Subscribe**
- **News**
- **Facebook**
- **Calendar**
- **Register for Parent Portal**

Download the Hempfield App



Thank you for coming tonight and we look forward to meeting your children!

