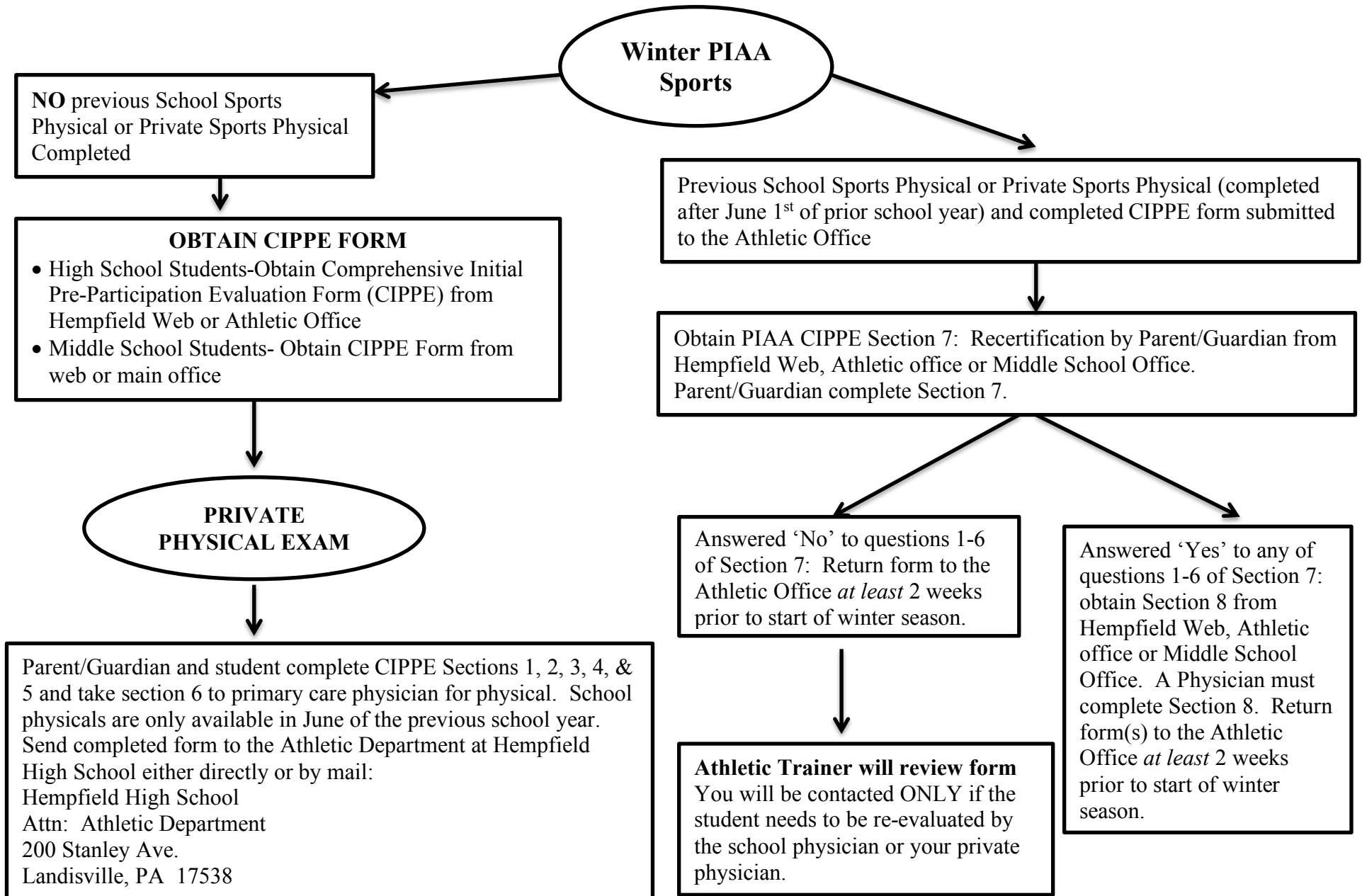


**Hempfield School District  
Landisville, PA 17538**

**Navigating WINTER Sports Physicals**



**Winter PIAA Sports**

**NO** previous School Sports Physical or Private Sports Physical Completed

**OBTAIN CIPPE FORM**

- High School Students-Obtain Comprehensive Initial Pre-Participation Evaluation Form (CIPPE) from Hempfield Web or Athletic Office
- Middle School Students- Obtain CIPPE Form from web or main office

**PRIVATE PHYSICAL EXAM**

Previous School Sports Physical or Private Sports Physical (completed after June 1<sup>st</sup> of prior school year) and completed CIPPE form submitted to the Athletic Office

Obtain PIAA CIPPE Section 7: Recertification by Parent/Guardian from Hempfield Web, Athletic office or Middle School Office. Parent/Guardian complete Section 7.

Answered 'No' to questions 1-6 of Section 7: Return form to the Athletic Office *at least 2 weeks* prior to start of winter season.

Answered 'Yes' to any of questions 1-6 of Section 7: obtain Section 8 from Hempfield Web, Athletic office or Middle School Office. A Physician must complete Section 8. Return form(s) to the Athletic Office *at least 2 weeks* prior to start of winter season.

**Athletic Trainer will review form**  
You will be contacted **ONLY** if the student needs to be re-evaluated by the school physician or your private physician.

Parent/Guardian and student complete CIPPE Sections 1, 2, 3, 4, & 5 and take section 6 to primary care physician for physical. School physicals are only available in June of the previous school year. Send completed form to the Athletic Department at Hempfield High School either directly or by mail:  
Hempfield High School  
Attn: Athletic Department  
200 Stanley Ave.  
Landisville, PA 17538