



CENTERVILLE MIDDLE SCHOOL

Mrs. Lisa Mumma – Principal

Mr. Bill Ackerman – Assistant Principal

Mr. Nate Milton – School Counselor



WELCOME



GOAL

- Provide valuable information to families new to the middle level



WHO DO I CONTACT?



WHO DO I CONTACT?

Health Concerns

Call 717-618-5085 to speak to:

- Bonnie Weaver RN, MSN, CSN
 - Certified school nurse
- Sheila Rohr, LPN
 - Health room assistant



IMMUNIZATION REQUIREMENTS

Required immunizations for seventh grade:

TDAP (tetanus booster)

MCV (meningococcal vaccine)

(no later than the first 5 days of school)

Each child is required to have a dental exam during their 7th grade school year.

WHO DO I CONTACT?

Classroom Concerns

- Contact the teacher directly.
 - Email: first_last@hempsfieldsd.org
 - Phone: (717) 898-5580



WHO DO I CONTACT?

Staff Concerns

- Not able to resolve an issue with a faculty member?
 - Contact the Principal, Lisa Mumma
 - Lisa_Mumma@hempfieldsd.org 717-898-5580

Behavior

- If you would like to discuss student behavior,
 - Contact the Assistant Principal, Bill Ackerman
 - Bill_Ackerman@hempfieldsd.org 717-898-5580

WHO DO I CONTACT?

Social/Emotional and Educational Program Concerns

- Contact the 7th grade School Counselor
 - Nate Milton
 - Nate_Milton@hempfieldsd.org
 - (717)898-5578



WHO DO I CONTACT?

Attendance

- Contact the Attendance Secretary
 - Angie Buckwalter
 - Cms_attendance@hempfieldsd.org
 - (717)898-5580



Attendance
Matters

Every student. Every day.

General Information & ATTENDANCE



ATTENDANCE



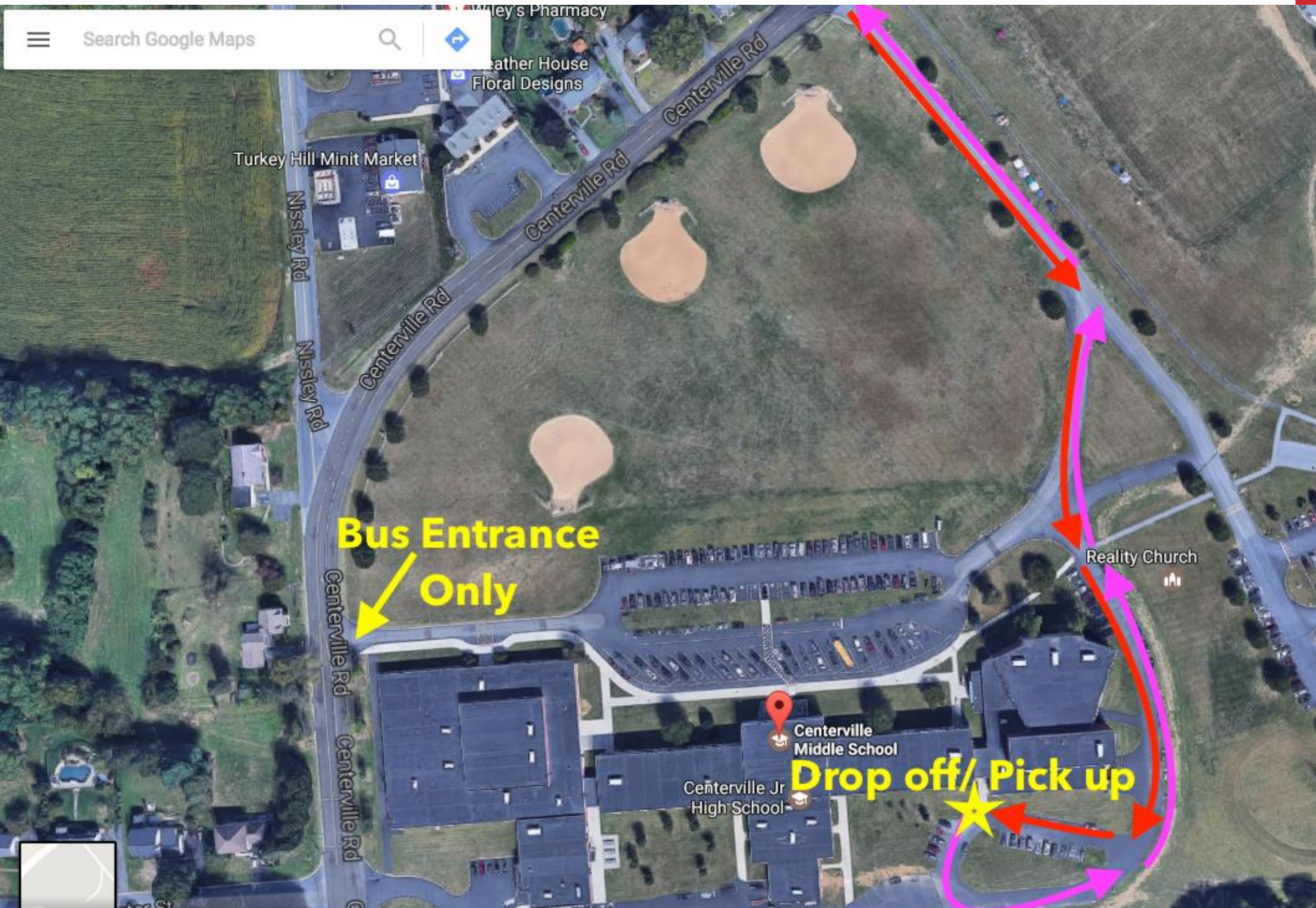
Drop Off

- 7:10 doors open
- Please use drop off circle located behind the school
- Enter ONLY using CES/CMS access road – please do not cut across front parking lot
- Late – please send in a note
- Students may sign in without parent/guardian

Attendance

- 3 days to hand in a written excuse
- Slips are collected in Homeroom
- Forgetful child? Just call.

CAR RIDER PICKUP AND DROP OFF



MORE ON ATTENDANCE...

Tardy to School

- Excused only for medical reason; all others considered “unexcused”
- Each student gets two “unexcused” tardy to school per quarter; the 3rd and any subsequent unexcused tardies result in discipline for the student.

Early dismissal

- A parent/guardian with ID must come in to the office and sign their student out.

Anticipated Absence

- Forms may be obtained from the main office
- Require Mrs. Mumma’s approval
- Students should follow up with teachers prior to their trip.

Extended absence

- Please utilize PowerSchool parent portal and Schoology to access school assignments.

EMERGENCY CONTACT INFORMATION

NOTICE

**PHOTO ID
REQUIRED**

- Only the contacts listed in PowerSchool will be able to pick up your child.
- Adults must also have an ID with them to show the office secretaries.
- When we need to contact home, we call parents first, then the other contacts in PowerSchool.



SCHOOL WIDE POSITIVE BEHAVIOR PLAN



Choose to be safe

Make responsible decisions

Show respect

BEHAVIOR



- Focus on preventing incidences
- Learning from mistakes
- Reporting Incidences
- Unstructured Time (bus, hallways, cafeteria)
- Cameras (entrances, hallways, cafeteria)
- Parent Portal grades and discipline

DRESS FOR SUCCESS

DRESS CODE

- **Basic Principle: Certain body parts must be covered for all students at all times.**
 - **Top of waist to top of legs**
 - **midriffs (bellies)**
- **No images or wording that relates or insinuates drug/alcohol use, violence, hate, intimidation or could be considered inflammatory towards consistently marginalized groups**
- **No hats; hoodies allowed, but hoods DOWN in building**

Violations may be referred to office (students will be allowed to “fix” the violation; repeat offenders will be treated as “insubordinate”).



PHYSICAL EDUCATION

We do not sell uniforms.

- Black, Red, or Grey shorts
(or sweatpants)
- White, black or red shirt

MUST HAVE SNEAKERS!



Helping your Student be Successful



Academics



- Self advocacy skills
- Time Management
- Organization
- Check PowerSchool/Schoology
- Social Media Management

Increased rigor:

- Classes are purposely more difficult to build student skills and stamina

Social / Emotional Skills



- Manage worries
 - Teaming
 - Lockers
 - Lunchtime

Adolescent Reality:

- Your son or daughter's friend group will fluctuate while in middle school.

FIRST DAY OF SCHOOL!!

Items covered during extended homeroom

- Student Schedule
- Locker assignment & combination
- Tour of entire building with student schedule
- Student handbook (rules & regulations)



FIRST DAY PAPERWORK



- Lunch menus/ free-reduced application
www.EZMealApp.com
- Parent volunteer form
- Excuse Cards



HOMEWORK

Homework is posted on Schoology.

Please communicate with your student's teachers to check on homework help. Many of our textbooks have online help for homework.

Emails are good; however, calls are sometimes better !



STUDENT ACTIVITIES

- Spelling Bee
- Geography Bee
- Math Counts
- Student Council
- Interscholastic Sports
- Band/Orchestra/Chorus
- Middle School Musical



ACTIVITIES CONTINUED....

- Science Fair
- Quiz Bowl
- Chess Team
- Jazz Band
- F.O.R. club
- Middle Pages Newspaper
- Yearbook
- Tech Squad
- Library Helper



Watch for updates on the website by reading the morning announcements

ATHLETICS

- School-hosted physicals usually the first week of June in Franklin Gym for \$20.00.
- Turn into the athletic office as soon as possible
- PIAA physical forms will be posted on the athletic web page
- Covers students all year long
- Present activity fee is \$50

TEAMING



SCRIBES



SCHEDULE

- 7 period day
- 46 minute periods
- 4 lunches
- 3 minutes between classes



Period		Regular
HR	Start	7:27
	End	7:41
Period 1	Start	7:44
	End	8:30
Period 2	Start	8:33
	End	9:19
Period 3	Start	9:22
	End	10:08
Period A	Start	10:11
	End	10:41
Period 4	Start	10:44
	End	10:57
Period B	Start	11:00
	End	11:30
Period 5	Start	11:33
	End	11:46
Period C	Start	11:49
	End	12:19
Period 6	Start	12:22
	End	12:35
Period D	Start	12:38
	End	1:08
Period 7	Start	1:11
	End	1:57
FLEX	Start	2:00
	End	2:40

CURRICULUM

7 periods

- 1) **Math**
- 2) **Science**
- 3) **Social Studies**
- 4) **ELA 7 (double period)**
- 5) **ELA 7**
- 6) **Exploratory period**
- 7) **Exploratory period**

MP1	MP2	MP3	MP4
PE / Music	PE / Music	PE / Health	PE / Health
Comp Apps	Tech Ed	FCS	Art

COURSE RECOMMENDATIONS INTO 7TH GRADE CLASSES

Course recommendations consist of 5 things:

- the student's current course grade
- the student's PVAAS projection
- the student's Acadience score
- the student's Exact Path scores
- the student's PSSA scores
- teacher recommendation

Qualities of a student placed in advanced level:

- analytical thinker
- strong reader and writer
- ability to comprehend and master new skills at a quick pace

REQUIRED CORE CLASSES:

LEVELS (COURSE SELECTION GUIDE ONLINE)

Math

- 1) Algebra 1A
- 2) Pre-Algebra A
- 3) Foundations of Math 7

Science

- 1) Advanced Life Science
- 2) Life Science

Social Studies

- 1) Advanced World History
- 2) World History

ELA 7 (double period)

- 1) Advanced ELA 7
- 2) ELA 7
- 3) Foundations ELA 7

REQUIRED EXPLORATORY COURSES

Students will automatically be scheduled the following exploratory courses:

- Physical Education 7
- Health Education 7



REQUIRED COURSES

All students must take these courses during their middle school career.

- 1) Art Engage A
- 2) Computer Applications A
- 3) Exploring Technology A
- 4) Intro to Family and Consumer Sciences A
- 5) Music (there are 4 different music classes)
- 6) Team Sports A

Any course not taken in 7th grade will automatically be scheduled for 8th grade.

MUSIC



Students will be given a choice for their music exploratory:

1. Music A
2. Vocal Techniques A
3. String Techniques A
4. Brass/Woodwinds/Percussion Techniques A

Students who elect String Techniques or Brass/Woodwinds/Percussion Techniques are given an additional choice - can elect either semester or full year.

CHOICE

Students may take:

- Current Topics of ELA
- Current Topics of Math
- Personal Fitness I
- String Techniques A (full year)
- Brass/Woodwinds/Percussion Techniques A (full year)

If any of these courses are chosen, it will take the place of one of the required exploratory classes.

ENSEMBLES

Band, chorus,
and orchestra
will occur
during FLEX
once a cycle.



COURSE SELECTION

Hempfield Website:

1. Course selection guide

- *Select Centerville Middle School*
- *Halfway down the page is a link to the course selection guide*
- *Be sure to select the 2022-2023 course selection guide*

2. 2022-2023 MS Course selection

- *Select Centerville Middle School*
- *Click on “About Us” tab*
- *Select 2022-2023 MS Course selection*

VERIFICATION FORM

Dear Parent/Guardian,

It is time to make plans for the 2022-2023 school year. Below, you will find the course placements for your child's eighth grade year. For major subject courses, course placements are based on the following criteria: academic pr scores, PVAAS projections, and a district administered math/reading assessment.

Course Number	Course Name	Notes
C2210	Advanced American History 8	
C4210	Advanced Earth Science	
C1210	Advanced ELA 8	
C3200	Algebra 1B	
C0311	Chorus 7-8	
C7213	Health 8	
9990	Lunch	
C7212	Phys Ed 8	

As you review this form, please note the following:

Instructions: Please place your top 6 choices as primary choices on the lines below. All students must also select 2 Alternate choices. If a course requires 2 slots (90-day courses) please list them on two different lines.

7th Grade Exploratory Choices

*Art Engage A	*Computer Applications A
*Exploring Technology Education A	*Introduction to Family & Consumer Science A
*Team Sports A	Personal Fitness 1
Current Topics of ELA 7	Current Topics of Math 7
<i>*One of the below courses must be taken while in Middle School</i>	
Music A	Vocal Techniques A
Brass, Woodwind, Percussion Techniques A	String Techniques A
<ul style="list-style-type: none"> • Half Year • Full Year (requires 2 slots) 	<ul style="list-style-type: none"> • Half Year • Full Year (requires 2 slots)
<i>* Required course: If this course is not taken in 7th grade, the course will be automatically scheduled for 8th grade.</i>	

Primary Choices

1. _____
2. _____
3. _____
4. _____
5. _____
6. _____

Alternate Choices

1. _____
2. _____

Students will fill out this worksheet in school and then bring the worksheet home to review their choices with their family. After reviewing with your family, please go to the link below and input your recommendations. Students will need to sign into their Google account to access the survey.

7th grade CMS Course Selections -
<https://forms.gle/UUm9rYYN46Dnh4Bz6>



ON THE
BACK

SCHOOL TOURS



SCHOOL TOURS



MAY VISIT

MAY 11 @ 9:30 — RES

MAY 12 @ 9:30 — MES

MAY 12 @ 1:00 — EPES

MAY 19 @ 9:30 — CES

GRADE 6 VISITATION DAYS

School Visits

- August 16
- August 18

Student guides will be available those days.

Parents are welcome!



FEEL CONNECTED TO CMS

Our website:

www.hempfieldsd.org

- **Subscribe**
- **News**
- **Facebook**
- **Calendar**
- **Register for Powerschool**



Thank you for attending. We look forward to meeting your children!

